

is that a penguin
on your desktop?



pla technology in libraries committee



Brian Auger
Angela Brade
Michael Pardee



what's the issue?



best return on
investment



~~one size fits all~~



what is
open source?



open

flexible, scalable,

thrifty, stable





you are on your own

there's no support



```

System          x ELinks          x Network          x operator@system: ~          x
  1 [           0.0%]      Tasks: 37 total, 1 running
  2 [#*        3.3%]      Load average: 0.01 0.04 0.07
Mem[| |#***** 51/1770MB]      Uptime: 00:16:45
                                Time: 00:07:32

  PID USER      PRI  NI  VIRT  RES  SHR S CPU% MEM%   TIME+  Command
1422 operator  20   0  4664  1924 1508 S  0.0  0.1  0:00.06 -bash
1850 operator  20   0  42472  8796 7424 S  0.0  0.5  0:00.16 ./ffmpeg/ffmpeg -f xllgrab -r 1 -s 1280x800 -i :0:0+0,0
1343 root       20   0  3076  1696 1368 S  0.0  0.1  0:00.09 /bin/login --
1748 operator  20   0  1828  556  480 S  0.0  0.0  0:00.00 /bin/sh /usr/bin/startx
1344 root       20   0  1788  552  480 S  0.0  0.0  0:00.00 /sbin/getty 38400 tty2
1345 root       20   0  1788  560  480 S  0.0  0.0  0:00.00 /sbin/getty 38400 tty3
1346 root       20   0  1788  556  480 S  0.0  0.0  0:00.00 /sbin/getty 38400 tty4
1347 root       20   0  1788  556  480 S  0.0  0.0  0:00.00 /sbin/getty 38400 tty5
1348 root       20   0  1788  556  480 S  0.0  0.0  0:00.00 /sbin/getty 38400 tty6
1766 root       20   0  23848 13336 8520 S  1.0  0.7  0:00.90 /usr/bin/X -nolisten tcp :0 -auth /tmp/serverauth.8EUAt
1785 operator  20   0  2664  848  640 S  0.0  0.0  0:00.00 /usr/bin/dbus-daemon --fork --print-pid 5 --print-addr=
1324 messageb  20   0  2664  1016 768 S  0.0  0.1  0:00.00 /usr/bin/dbus-daemon --system
1791 operator  20   0  6948  3512 2196 S  0.0  0.2  0:00.09 /usr/lib/libgconf2-4/gconfd-2
1242 root       20   0  1784  604  492 S  0.0  0.0  0:00.02 /usr/sbin/acpid
1350 root       20   0  18560 3096 2260 S  0.0  0.2  0:00.04 /usr/sbin/console-kit-daemon --no-daemon
1293 root       20   0  3876  792  628 S  0.0  0.0  0:00.00 /usr/sbin/cron
1282 root       20   0  1988  508  416 S  0.0  0.0  0:00.02 /usr/sbin/gpm -m /dev/input/mice -t exps2
1190 root       20   0  27660 1756 1088 S  0.0  0.1  0:00.04 /usr/sbin/rsyslogd -c4
1798 operator  20   0  4656  1892 1484 S  0.0  0.1  0:00.00 bash
1804 operator  20   0  4652  1880 1480 S  0.0  0.1  0:00.01 bash
1839 operator  20   0  4664  1044 632 S  0.0  0.1  0:00.00 bash
1781 operator  20   0  3372  772  524 S  0.0  0.0  0:00.00 dbus-launch --autolaunch 5da8940a3e11f691921e10df000003
1462 root       20   0  2412  764  492 S  0.0  0.0  0:00.00 dhclient -v -pf /var/run/dhclient.eth0.pid -lf /var/lib
1499 root       20   0  2412  544  276 S  0.0  0.0  0:00.00 dhclient wlan0
1796 operator  20   0 15476 6960 3716 S  0.0  0.4  0:00.19 elinks
1793 operator  20   0  1984  712  588 S  0.0  0.0  0:00.00 gnome-pty-helper
F1 Help F2 Setup F3 Search F4 Invert F5 Tree F6 SortBy F7 Nice - F8 Nice + F9 Kill F10 Quit

```


```

r=[ operator1 ]= r=[ operator1 operator1 operator1 operator1 operator1 operator1 # users=6 ]= r=[ 4.6G ]= r=[ Ba
ttery 0: Full, 100% ]= r=[ Thermal 0: ok, 126.5 degrees F ]= operator1@system:~$

```



groovix

-  Accessories >
-  CD/DVD Burning >
-  Education >
-  Graphics >
-  Internet >
-  Office >
-  Sound & Video >
-  Preferences >
-  File Browser
-  Help
-  Logout



your work is accessible



why
do you
have PCs



catalog access
content access
office automation
digitization



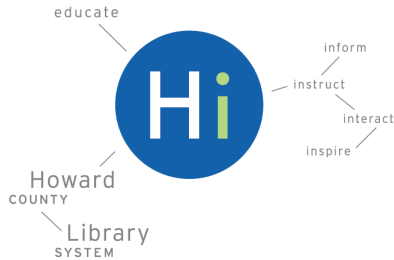
savings from:

using otherwise “obsolete” equipment

using devices better-suited to the purpose

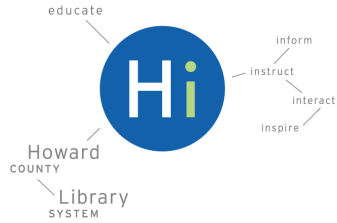
slashing your need for support





2014 Marks 10 Year Anniversary of HCLS Using Groovix

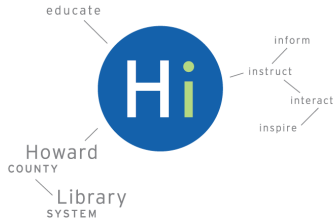




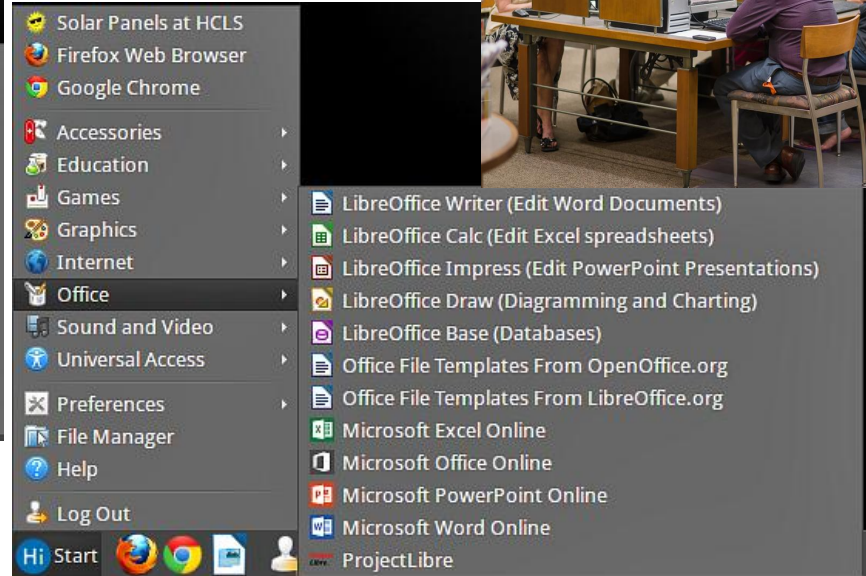
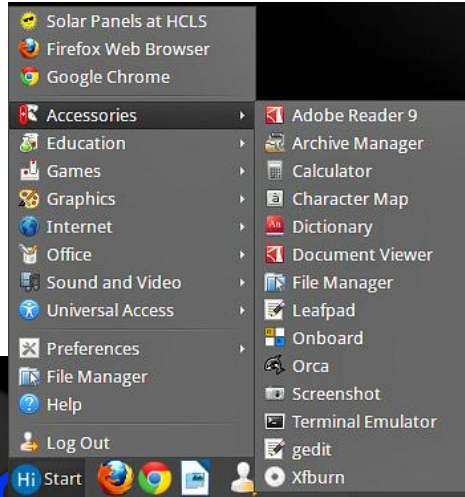
HCLS and Customer Utilization

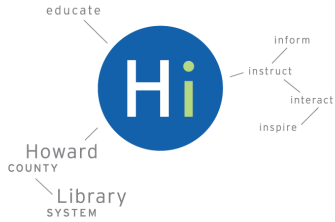
- a. Public Access Computers (388/48%)
- b. Staff Workstations (27%)



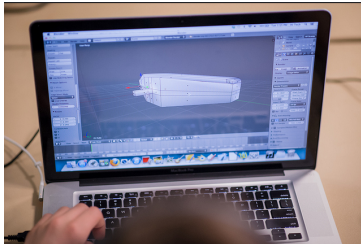


HCLS Customer Utilization





Benefit: Cost, Stability, & Flexibility



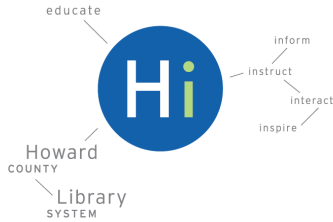
- Cost Avoidance – CPUs – 11-13% purchase price point + upgrade fees

<u>Linux</u>	<u>Windows</u>
\$ 184,688	\$ 206,028
	+ Upgrades
	+ Software

Support Retired?

- Stability – Extremely stable and incremental modifications
- Solid Investment for PACs





Benefit: Cost, Stability, & Flexibility

- Flexibility – Customization that improve the customer's experience.

A sidebar menu with the following items:

- AisleRiot Solitaire
- Chess
- Childsplay
- Educational suite GCom
- Five or More
- Four-in-a-Row
- FreeCell Solitaire
- Ignno
- Klotski
- Lights Off
- Mahjongg
- Mines
- Nibbles
- Quadrappassel
- Robots
- Sudoku
- Swell Foop
- Tali
- Tetravex

Other visible desktop elements include:

- Solar Panels at HCLS
- Firefox Web Browser
- Google Chrome
- Accessories
- Education
- Games
- Graphics
- Internet
- Office
- Sound and Video
- Universal Access
- Preferences
- File Manager
- Help
- Log Out
- Hi Start

The screenshot shows the Howard County Library System website. The main content area displays search results for "Library Reads - May" and "School Library Journal's Top 25 Children's Novels". A confirmation dialog box is overlaid on the page, titled "Axis 360 and Acoustik via the Catalog". The dialog contains the following text:

Axis 360 and Acoustik via the Catalog

Freeze Confirmation Print Job

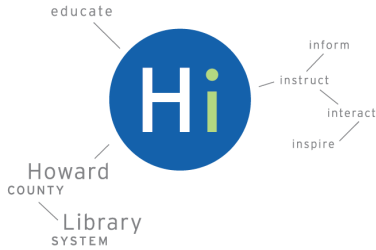
Check Out/Print/Android Tablet/Kindle Fire/Book and No Sound Reader

You must confirm your print job before it will be sent to the printer. You are about to print 2 pages. Are you sure you want to print this?

Maryland's Dig

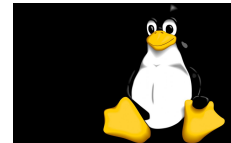
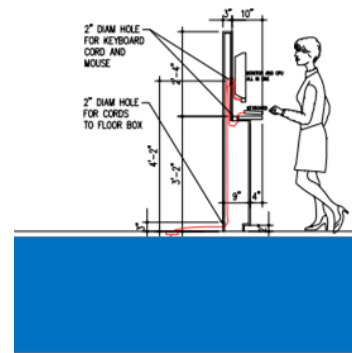
- E-books: Apple, Kindle, Nook, etc.
- Audiobooks: Apple, Kindle, Nook, etc.

At the bottom right of the screenshot, there is a small cartoon penguin character.



10 Years later Perspective: HCLS Fleet, Applications, and Use

- Continue using 3rd Party Service IT staff and creates even greater efficiencies.
- HCSL Total Computer Fleet now and beyond.....





OPEN·SENSE
S O L U T I O N S L L C

groovix



a practical ideology



ubuntu



debian



open source™



chrome



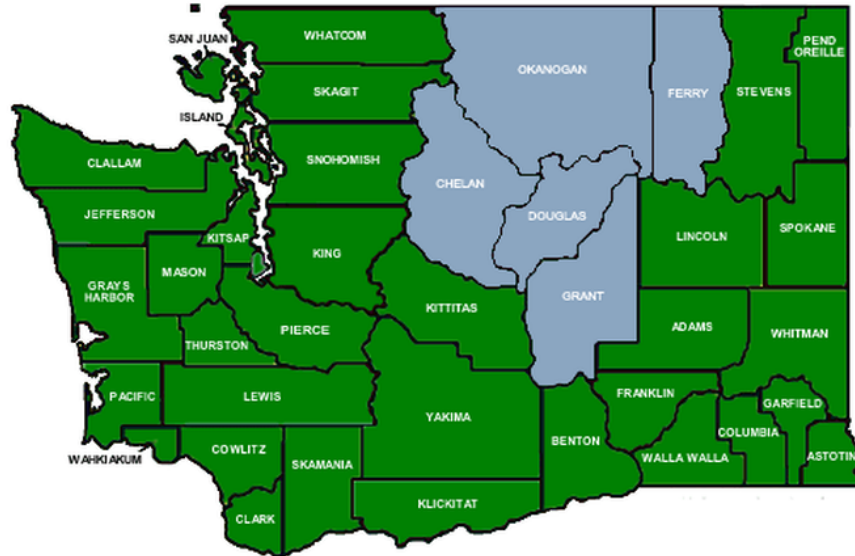
automation

Libraries

Brewster
Bridgeport
Cashmere
Chelan
Coulee City
East Wenatchee
Entiat
Ephrata
George
Grand Coulee
Leavenworth
Manson
Mattawa
Moses Lake
Okanogan
Omak
Oroville
Pateros
Peshastin
Quincy
Republic
Royal City
Soap Lake
Tonasket
Twisp
Waterville
Warden
Wenatchee
Winthrop




North Central Regional Library



customization

BB-A03 Thu Jun 26 12:18 AM

Welcome to the Somerset County Library System




Click Here to Login

If you have a reservation,
enter your reservation number and pin.
Then click OK.

Reservation #:

Pin:

This computer is not reserved.





groovix

built from the ground up for public computing



groovix

a complete public computing solution

Authentication

Time Management

Reservations

Content Filtering

Security

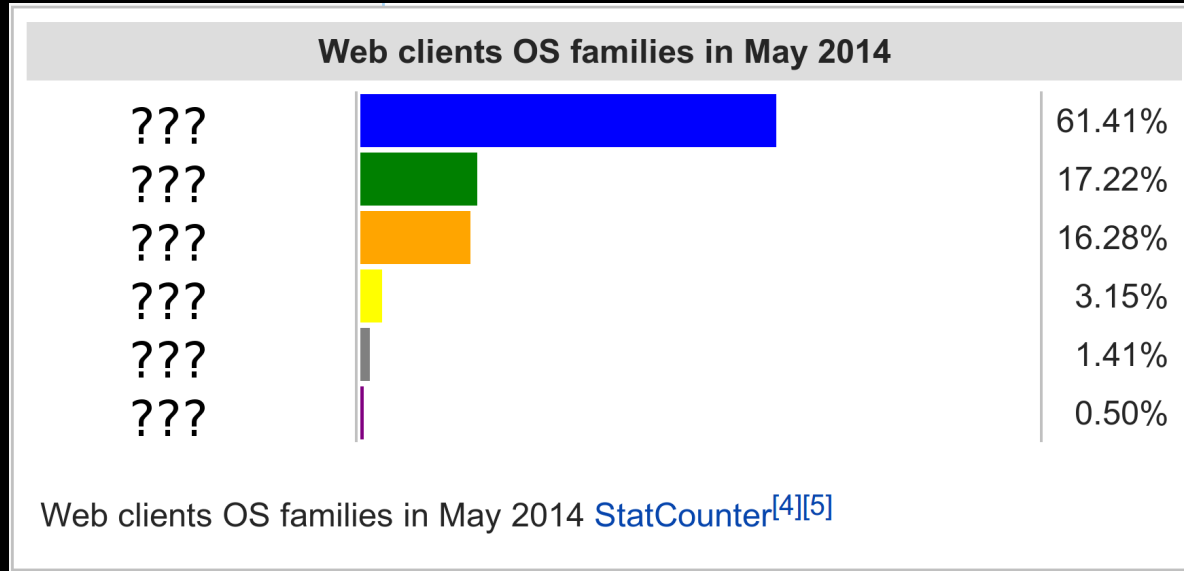
Print Management

Automatic Updates

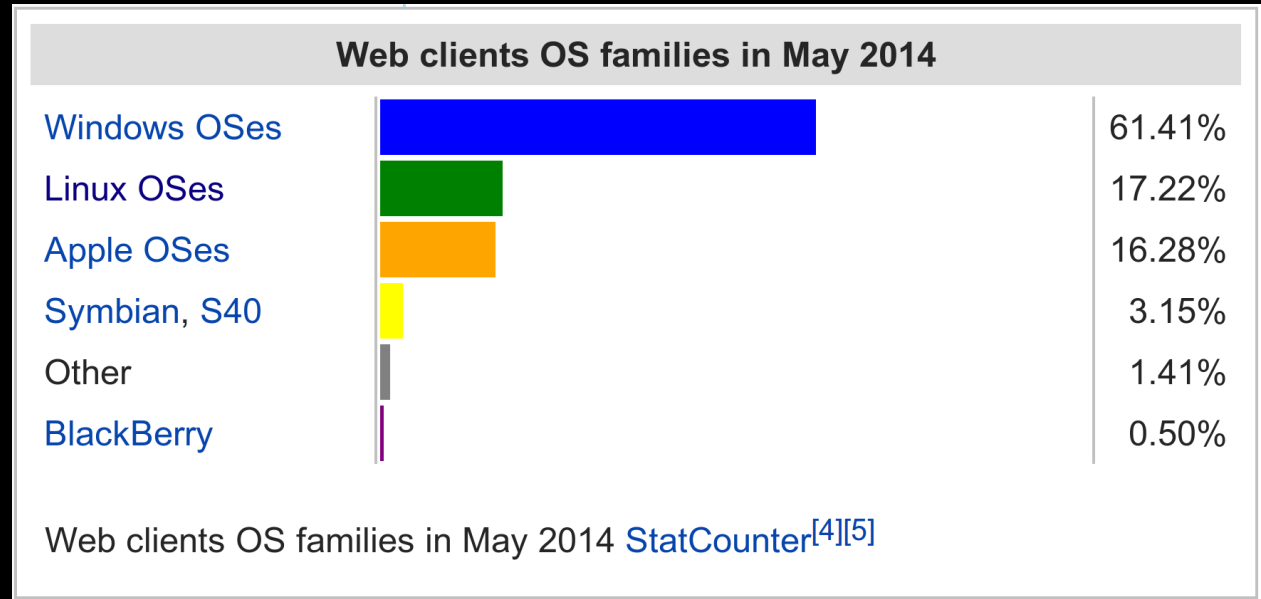
Central Management



there's no need to fear...



linux is a formidable underdog



not **everyone loves change**
staff

"you've effectively eliminated 50% of our workload"
- Chris Phillips, Lake County Public Library, IN

patrons

"I love these new computers, they're so much faster"



linux for everyone

"Once I got Groovix all set up, I haven't touched it."
- Marian Wynn

<https://techsoupforlibraries.org/spotlight/linux-based-public-computers-still-running-strong>



how to get started today

buy a chromebox/chromebook

try ubuntu with guest sessions

groovix.com/go or grab a dvd here



resource list for this presentation:
<http://goo.gl/82nASy>

